

SCREENLIFTER  
75

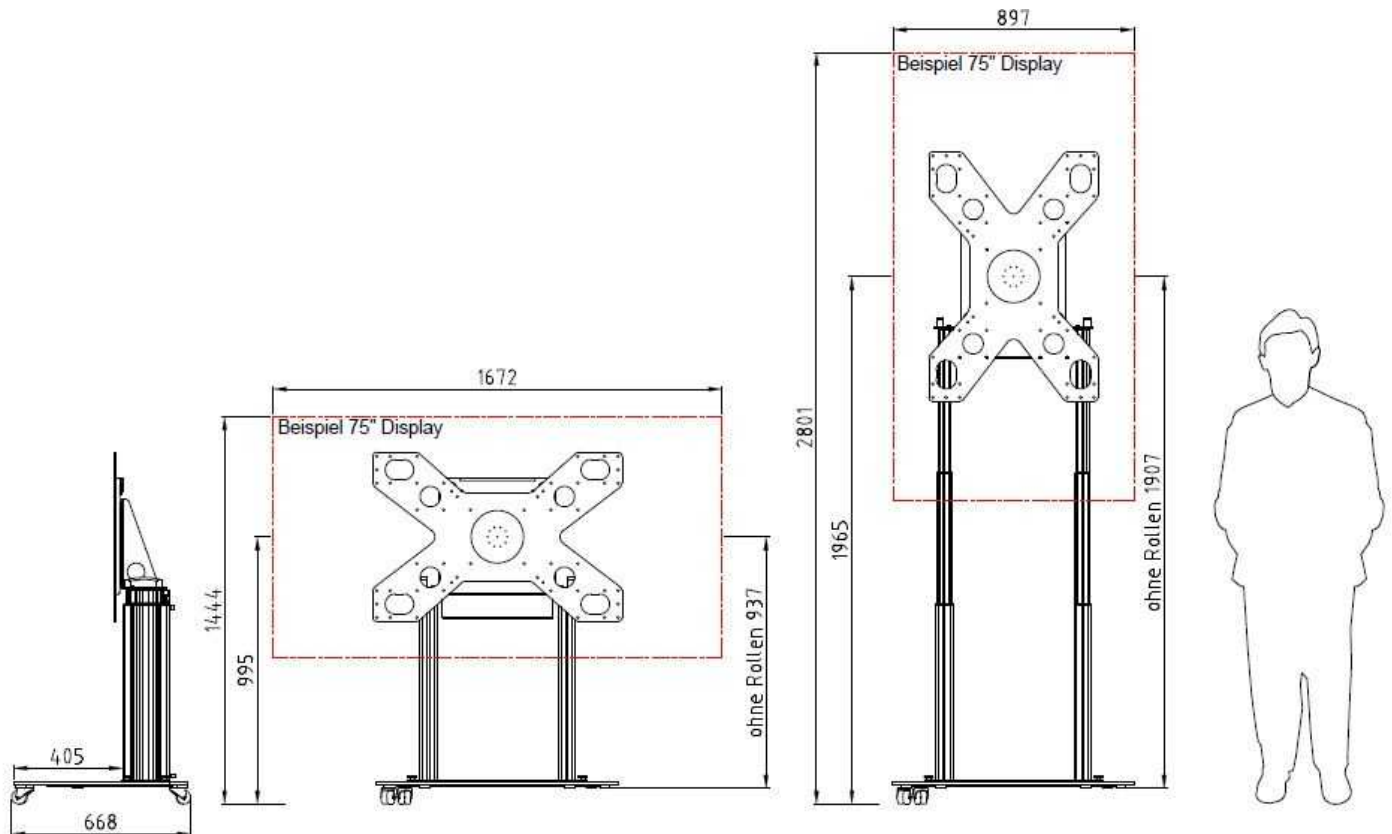
DISPLAY SYSTEM



SCREENLIFTER 75

The new ScreenLifter SlimLine Series is the economically priced, compact and flexible extension of our ScreenLifter product family and was specially made for the latest light-weight displays from 55" up to 80". The ScreenLifter 75 was specifically developed to meet the requirements of AV-rental companies.

The minimal package size saves transportation costs and the tool free setup within 5 minutes saves setup time. The ScreenLifter 75 is suitable for almost all displays of all manufacturers. The lifting system can be provided with different base plates e.g. rolling-carts, "pop-out" box or with mounting kit for fix installation directly on the floor.

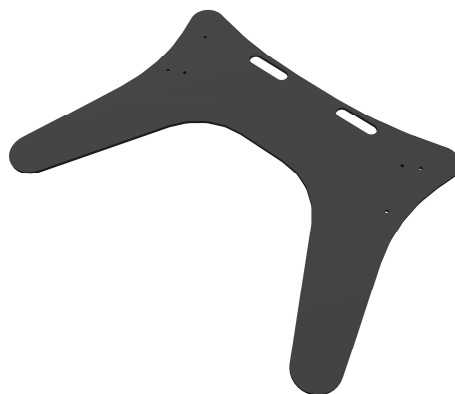


**FEATURES & FUNCTIONS**

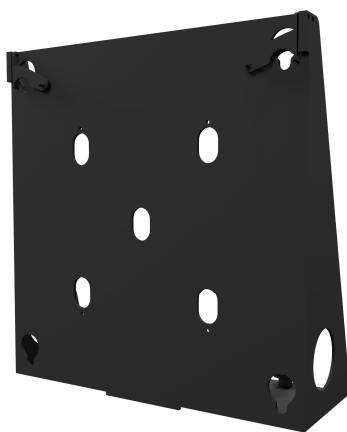
- Stepless electrical height adjustment up to 190 cm
- Minimized packing dimensions saves transport costs
- Clean and slim design specially for light LCD displays
- Double column telescopic extension for high stability
- Portrait or landscape display mount included
- Rotary head (stepless rotatable)
- Load capacity: 90 Kg
- Solid steel & aluminum construction
- Tool free setup within 5 minutes
- With special transport flight case
- With VESA or other 5-point mounts available
- Made in Germany



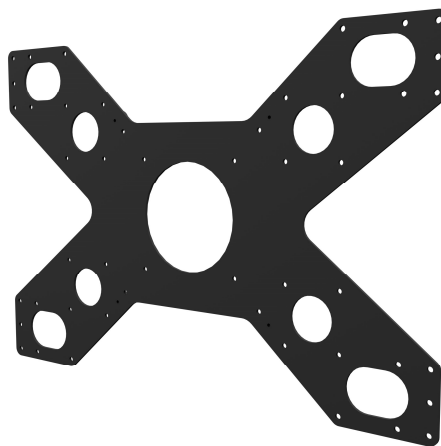
Lifting unit inclusive Microprocessor control. Also able for fixed installation or installation in a flight case.



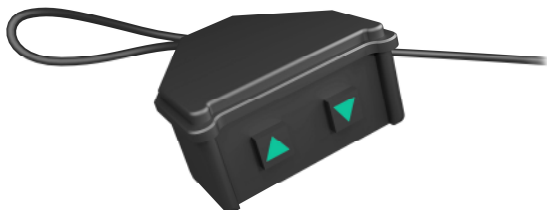
Base plate with rubber feet with special finish in RAL 9005. Extremely insensitive surface!



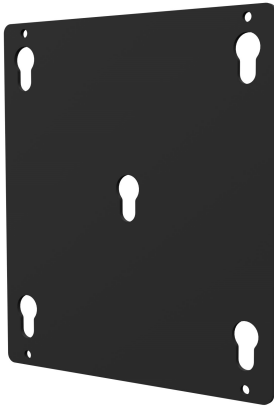
Standard column head for display mounting in vertical or portrait orientation.



MS VESA mounting from 400 x 400 to 900 x 600 mm. Can be replaced with the Audipack adapter plates.



Handset control included.

**OPTIONAL ACCESSORIES**

MS Audipack adapter plate.



Column head with integrated 90° rotation.  
Only in conjunction with VESA mount MS.



SL 75 flight case with very small packing  
dimension of only 105 x 44 x 86 cm.



4 heavy duty casters. Optional for the base plate.

Case Weight: 46kg, 101 lb  
Case Dimensions:  
1203 x 513 x 852 mm  
47,3 x 20,2 x 33,5 inch

